

2017

Product Range

Scanning & Display solutions

≡ OPTICON

4	ESL & FULL COLOR DISPLAYS Accessories	
6	WINDOWS MOBILE COMPUTERS Accessories	
8	ANDROID MOBILE COMPUTERS Accessories	
10	HANDHELD COMPUTERS Accessories	
12	COMPANION SCANNERS Accessories	
14	WIRELESS SCANNERS Accessories	
16	CABLED SCANNERS Accessories	
18	STATIONARY SCANNERS Accessories	3
20	SCAN ENGINES	
22	PRODUCT SELECTOR	



EE-150R

Display: e-paper
 Power 2x CR2450
 Radio protocol: IEEE 802.15.4
 Number of dots: 152 x 152
ART.CODE: 13946



EE-201

Display: e-paper
 Power: 2x CR2450
 Radio protocol: IEEE 802.15.4
 Number of dots: 200 x 96
ART. CODE 13163



EE-290

Display: e-paper
 Power: 2x CR2450
 Radio protocol: IEEE 802.15.4
 Number of dots: 296 x 128
ART. CODE 13841



ET-350

Display: TFT
 Power: 5V
 Interface: USB Ver 2.0
 Number of dots: 320 x 240
ART. CODE 13698



EE-440

Display: e-paper
 Power: 2x AAA
 Radio protocol: IEEE 802.15.4
 Number of dots: 400 x 300
ART. CODE 13381

SOLD SEPARATELY



EBS-40 BASE STATION

Power supply 6V/ 2A sold separately [10991]

Ethernet cable sold separately [12607]

ART. CODE 13097

SOLD SEPARATELY FOR EE-150, EE-201 AND EE-290



BRACKET, WALL MOUNT

ART. CODE 13758



BRACKET, WALL MOUNT

ART. CODE 13759

Adhesive

ART. CODE 13849

SOLD SEPARATELY FOR EE-440



BRACKET, WALL MOUNT

ART. CODE 13758



6

H-21

H-21 1D
Barcode laser scanner
Operating system: Windows Mobile™ 6.5
Color camera
Keypad: Numeric or Qwerty
IP rate: 64
GPRS/EDGE/3G/3.5G
W-LAN, (IEEE 802.11 b/g)
Bluetooth
AGPS
(NUMERIC) ART. CODE 12596
H-21 2D
2D CMOS imager with auto-focus
(NUMERIC) ART. CODE 12597
(QWERTY) ART. CODE 12599

H-22

H-22 1D
Barcode laser scanner
Operating system: Windows Mobile™ 6.5.3
Color camera
Keypad: Numeric or Qwerty
IP rate: 65
GPRS/EDGE/3G/3.5G
W-LAN, (IEEE 802.11 b/g/n)
Bluetooth
AGPS
(NUMERIC) ART. CODE 12752
(QWERTY) ART. CODE 12754
(NUMERIC, RFID) ART. CODE 12756
(QWERTY, RFID) ART. CODE 12758
H-22 2D
2D CMOS imager with auto-focus
(NUMERIC) ART. CODE 12753
(QWERTY) ART. CODE 12755
(NUMERIC, RFID) ART. CODE 12757
(QWERTY, RFID) ART. CODE 12759

H-32

H-32 1D
Barcode laser scanner
Operating system: Windows Embedded Compact 7
Keypad: Numeric
IP rate: 54
W-LAN, (IEEE 802.11 a/b/g/n/)
Bluetooth
ART. CODE 13218
H-32 2D
2D CMOS imager
ART. CODE 13648

DEFAULT ENCLOSED



H-21

- USB AC Adapter
- Standard battery H-21 [12560]
- Getting started disc
- Ear microphone
- Leather case
- Wrist strap
- Screen protector
- Mini USB cable
- Stylus + Cord



H-22

- USB AC Adapter
- Ear microphone
- Wrist strap
- Micro USB cable
- Stylus + Cord



H-32

- USB cable
- Wrist strap
- Quick start guide
- Stylus + cord [13289 + 13304]

SOLD SEPARATELY



CRD-22

- Power supply 5V enclosed
- USB cable enclosed
- Spare battery charging bay integrated

ART. CODE 12923



H-22 HOLSTER

ART. CODE 13104



CMK-22 CAR KIT

ART. CODE 13062



H-22 PISTOL GRIP

ART. CODE 12936



CRD-21

- Power supply 5V sold separately [10991]
- USB cable enclosed
- Spare battery charging bay integrated

ART. CODE 12558



H-21/H-22

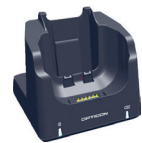
- Rechargeable battery
- ART. CODE 12560**

SOLD SEPARATELY FOR H-32



RECHARGEABLE BATTERY

ART. CODE 13224



CRD-32*

- Power supply 6V/2A sold separately [10991]
- Micro USB cable 1m sold separately [13610]
- Ethernet cable 1m sold separately [12607]

ART. CODE 13399



CRD-32-E5

- Power supply 12V/3.5A sold separately [13426]
- Euro cable C7 1,5m sold separately [13668]

ART. CODE 13235



HOLSTER

ART. CODE 13225

* Terminal charging features and spare battery charging bay integrated



8

H-27

H-27 1D

Barcode laser scanner

Operating system: Android 4.2.2

5.0 MP camera with Auto Focus and Flash LED

IP rate: 65

HSPA+ with Data and Voice

WiFi, 802.11 a/b/g/n

Bluetooth 4.0

NFC

GPS and GLONASS

ART. CODE 13280

H-27 2D

2D CMOS imager

ART. CODE 13281

DEFAULT ENCLOSED



H-27

Battery [\[13343\]](#)

Power adapter

USB to DC cable

Micro USB cable

Ear phone

Quick start guide

SOLD SEPARATELY



H-27/CRD-27 POWER
CABLE

US Power cable

[ART. CODE 13345](#)

EU Power cable

[ART. CODE 10999](#)

SA Power cable

[ART. CODE 13348](#)



CRD-27

Spare battery charging
bay integrated

[ART. CODE 13344](#)



H-27 SILICON COVER

[ART. CODE 13664](#)

1D-LASER

2D



OPL-9725 OSE
Barcode laser scanner
Keypad: 1 key
IrDA
ART. CODE 13222



OPH-1005
Barcode Laser Scanner
Keypad: 23
Display: 320 x 240 pixels
IrDA
ART. CODE 13036



PX-36
2D CMOS imager
Keypad: 18 keys
Display: 112 x 64 pixels
graphic LCD
IrDA
Bluetooth
ART. CODE 13749



OPL-9815
Barcode laser scanner
Keypad: 18 keys
Display: 112 x 64 pixels
graphic LCD
IrDA
GPS
Bluetooth
ART. CODE 12963



OPH-3001
Barcode Laser Scanner
Keypad: 21
Display: 320 x 240 pixels
IrDA, mini USB
ART. CODE 13656

DEFAULT ENCLOSED FOR OPH-1005



WRIST STRAP

Enclosed for all batch terminals



RECHARGEABLE BATTERY

Enclosed for all batch terminals

ART. CODE 12025

SOLD SEPARATELY FOR OPH-1005



CRD-1004*

Ethernet cable enclosed [\[12607\]](#)

Power supply 6V/2A sold separately [\[10991\]](#)

ART. CODE 12589

CRD-1006*

USB cable enclosed [\[10957\]](#)

RS232 cable enclosed [\[12094\]](#)

Power supply 6V/2A sold separately [\[10991\]](#)

ART. CODE 13167

* Spare battery charging bay integrated

CHARGING AND COMMUNICATION

SOLD SEPARATELY PX-36

CRD-9723RU

USB cable, sold separately [\[10957\]](#)

RS232 cable enclosed [\[10299\]](#)

Power supply 6 (5.7)V, sold separately [\[10850\]](#)

ART. CODE 10935

CRD-9723RU5

5 x communication, 5 x charging

USB cable enclosed

RS232 cable enclosed

Power supply 6V, sold separately [\[10991\]](#)

ART. CODE 11098

PX-36



USB CABLE

Enclosed

DEFAULT ENCLOSED FOR OPH-3001



WRIST STRAP



USB CABLE

BATTERY

PX-36



RECHARGEABLE BATTERY

Sold separately

ART. CODE 13224

OPL-9700 SERIES



RECHARGEABLE BATTERY

Default enclosed

ART. CODE 10303

OPL-9815



RECHARGEABLE BATTERY

Sold separately

sn <6001

ART. CODE 13090



RECHARGEABLE BATTERY

Default enclosed

sn >6000

ART. CODE 12025

1D-CCD



OPN-4000i
Barcode CCD scanner
Keypad: 2 keys
USB
Bluetooth
MFi certified
ART. CODE 13442



OPN-4000n
Barcode CCD scanner
Keypad: 2 keys
USB
Bluetooth
ART. CODE 13443

1D-LASER



OPN-2001
Barcode laser scanner
Keypad: 2 keys
USB
ART. CODE 11858



RS-2006
Barcode laser Ring scanner
Adjustable strap
Keypad: 2 keys + 1 trigger
USB
Bluetooth
ART. CODE 13919



SHS-35
Barcode laser scanner
Keypad: 3 keys
Display: 112 x 64 pixels graphic LCD
IrDA
USB
ART. CODE 11395



OPN-2006
Barcode laser scanner
Keypad: 2 keys
USB
Bluetooth
ART. CODE 13336

2D



PX-20
2D CMOS imager
Keypad: 2 keys
USB
Bluetooth
ART. CODE 13131



OPN-3002i
2D CMOS imager
Keypad: 2 keys
USB
Bluetooth
MFi certified
ART. CODE 13169



OPN-3002n
2D CMOS imager
Keypad: 2 keys
USB
Bluetooth
ART. CODE 13168

CHARGING AND COMMUNICATION

SOLD SEPARATELY OPL-9700 / OPL-9800 SERIES
CRD-9723RU
 USB cable, sold separately [10957]
 RS232 cable enclosed [10299]
 Power supply 6 (5.7)V, sold separately [10850]
ART. CODE 10935

CRD-9723RU5
 5 x communication, 5 x charging
 USB cable enclosed
 RS232 cable enclosed
 Power supply 6V, sold separately [10991]
ART. CODE 11098

OPN SERIES, PX-20



USB CABLE
 Enclosed

SHS-35 SERIES



USB CABLE
 Enclosed

OPERATION

WRIST STRAP
 Default enclosed [10225]
 (All Companion Scanners, except for OPN series)

OPN-3002



SILICON COVER
 Black
ART. CODE 13401

OPN SERIES, PX-20



NECK STRAP
 Default enclosed

OPN-2001/4/6



SILICON COVER
 Black
ART. CODE 13402

BATTERY

SHS-35



DRY CELL AAA
 Default enclosed items
 Also sold separately
ART. CODE 10344



OPC-3301i

Barcode CCD scanner

56 x 113 x 132 mm (w x d x h)

2.20 x 4.45 x 5.20 in (w x d x h)

Weight: Ca. 127 g / 4.3 oz

Bluetooth

MFi certified

ART. CODE 13724



OPI-3301i

2D CMOS imager

56 x 113 x 135 mm (w x d x h)

2.20 x 4.45 x 5.32 in (w x d x h)

Weight: Ca. 132 g / 4.5 oz

Bluetooth

MFi certified

ART. CODE 13725

SOLD SEPARATELY



CHG-3201

OPC-3301i, OPI-3301i

Power supply 6V/2A sold separately [10991]

ART. CODE 13726



OPA-3201 DONGLE

OPC-3301i, OPI-3301i

USB

ART. CODE 13840

DEFAULT ENCLOSED



RECHARGEABLE

BATTERY

Default enclosed item

Also sold separately

ART. CODE 13830

1D-CCD



C-40
Barcode CCD scanner
Weight: Ca. 73 g / 2.57 oz
(excl. cable)
Drop proof: 1.5 m / 5 ft
Ergonomics: Hand scanner



L-50C
Barcode CCD scanner
Weight: Ca. 145 g / 5.1 oz
Drop proof: 1.5 m / 5 ft
Ergonomics: Pistol



C-41S
Barcode CCD scanner
Weight: Ca. 55 g / 1.9 oz
(excl. cable)
Drop proof: 1.5 m / 5 ft
Ergonomics: Hand scanner



C-37
Barcode CCD scanner
Weight: Ca. 90 g / 3.2 oz
(excl. cable)
Drop proof: 1.5 m / 5 ft
Ergonomics: Hand scanner

1D-LASER



OPL-6845Z
Barcode laser scanner
Weight: Ca. 90 g / 3.2 oz
Drop proof: 1.5 m / 5 ft
Ergonomics: Hand scanner with stand



OPR-2001
Barcode laser scanner
Weight: Ca. 60 g / 2.1 oz
Drop proof: 1.5 m / 5 ft
Ergonomics: Hand scanner with stand



OPR-3201
Barcode laser scanner
Weight: Ca. 80 g / 2.8 oz
Drop proof: 1.5 m / 5 ft
Ergonomics: Pistol scanner with stand



OPR-3001
Barcode laser scanner
Weight: Ca. 230 g / 8.1 oz
(excl. cable)
Drop proof: 2 m / 6.5 ft
Ergonomics: Pistol



L-46R
Barcode laser scanner
Weight: Ca. 111g / 3.9 oz
(ex cable)
Drop proof: 1.8 m / 6 ft
Ergonomics: Hand scanner with stand.

2D



OPI-2201
2D CMOS imager with auto-focus
Weight: Ca. 175 g / 6.2 oz
(excl. cable)
Drop proof: 1.5 m / 5 ft
Ergonomics: Pistol



L-51X
2D CMOS imager
Weight: Ca. 150 g / 5.3 oz
Drop proof: 1.5 m / 5 ft
Ergonomics: Pistol



OPI-3601
2D CMOS imager
Weight: Ca. 80 g / 2.8 oz
(excl. cable)
Drop proof: 1.5 m / 5 ft
Ergonomics: Pistol



L-22X
2D CMOS imager
Weight: Ca. 150 g / 5.3 oz
Drop proof: 1.5 m / 5 ft
Ergonomics: Hand scanner



L-46X
2D CMOS imager
Weight: Ca. 112g / 3.9 oz
(ex cable)
Drop proof: 1.8 m / 6 ft
Ergonomics: Hand scanner with stand.

STAND



OPL-6845Z STAND

Default enclosed item

Optionally sold separately

(BLACK) ART. CODE 11108



OPR-2001 STAND

Default enclosed item

Also sold separately

ART. CODE 11647



OPR-3001 STAND BLACK

Sold separately

ART. CODE 11832

CABLE

L-50 DETACHABLE CABLE

USB, 2m, sold separately

ART. CODE 13774

M-10 DETACHABLE

CABLE RS232

black 2m, sold separately

ART. CODE 13695

ART. CODES SCANNERS

C-37 (WHITE/BLACK)		
C-37-WHITE-USB	12309	
C-37-BLACK-RS232	12305	
C-37-BLACK-USB	12306	
C-40		
C-40-USB-HID-AM-V-WHT	13672	
C-41S		
C-41S-USB-HID-BLK	13894	
L-46		
L-46X-USB-BLK-STD	14007	
L-46R-USB-BLK-STD	14008	
L-46X-USB-WHT-STD	14060	
L-46R-USB-WHT-STD	14059	
L-50		
L-50C-USB-BLK+STD	13750	
L-50C-USB-WHT+STD	13923	
L-50C-RS232-BLK+PS+STD	13927	
L-50R-USB-BLK+STD	13751	
L-50R-USB-WHT+STD	13944	
L-50R-USB-WHT+STD	13954	
L-50X-USB-BLK+STD	13955	
RS232 CABLE FOR L-50	14001	
USB CABLE FOR L-50	13774	
L-51		
L-51X-USB-WHT	13956	
L-51X-USB-BLK	13957	
OPI-2201 (BLACK)		
OPI-2201-BLACK-RS232	12097	
OPI-2201-BLACK-USB	12098	
OPI-3601		
OPI-3601-BLACK-RS232+STAND+PS	13083	
OPI-3601-BLACK-USBHID+STAND	13084	
OPL-6845Z (WHITE/BLACK)		
Default with stand		
OPL-6845Z-WHITE+STD-RS232	12091	
OPL-6845Z-WHITE+STD-USB	12092	
OPL-6845Z-WHITE+STD-WEDGE	12093	
OPL-6845Z-BLACK+STD-RS232	12088	
OPL-6845Z-BLACK+STD-USB	12089	
OPL-6845Z-BLACK+STD-WEDGE	12090	
OPR-2001		
OPR-2001+STD-RS232	11646	
OPR-2001+STD-USB	11645	
OPR-2001+STD-WEDGE	11644	
OPR-3001 (WHITE/BLACK)		
Default straight cable		
OPR-3001-WHITE-USB	11611	
OPR-3001-BLACK-RS232	11756	
OPR-3001-BLACK-USB	11757	
OPR-3001-BLACK-WEDGE	11758	
Also coiled cable		
OPR-3001-BLACK-RS232-COILED	11759	
OPR-3001-BLACK-USB-COILED	11760	
OPR-3201 (WHITE/BLACK)		
Default with stand		
OPR-3201-WHITE+STD-USB	11795	
OPR-3201-BLACK+STD-RS232	11843	
OPR-3201-BLACK+STD-USB	11789	
OPR-3201-BLACK+STD-WEDGE	11790	
L-22X		
L-22X-USB-BLK-STD	14009	
M-10		
M-10-USB BLACK	13356	
M-10-USB WHT	13440	
POWER SUPPLY		
POWER SUPPLY 6V/2A		
OPR-2001-RS232		
OPR-3001-RS232		
OPR-3201-RS232		
Sold separately		
C-37-RS232		
OPI-2201-RS232		
OPI-2201-WEDGE		
OPL-6845Z-RS232		
Enclosed item		
ART. CODE 10991		



POWER SUPPLY 6V/2A

OPR-2001-RS232

OPR-3001-RS232

OPR-3201-RS232

Sold separately

C-37-RS232

OPI-2201-RS232

OPI-2201-WEDGE

OPL-6845Z-RS232

Enclosed item

ART. CODE 10991

1D-LASER



L-50R

Barcode laser scanner

Weight: Ca. 145 g / 5.1 oz

Drop proof: 1.5 m / 5 ft

Ergonomics: Pistol

2D



M-10

2D CMOS imager

Omni-directional

Scan rate: Up to 60 fps

72 x 70 x 139 mm (wxdxh)

Presentation scanner

All models are available with RS232, Keyboard Wedge and USB interface. Information about article codes is supplied on this page.

1D-CCD



F-70
Barcode CCD scanner
Scan rate: 700 scans/sec
Case material: Sheet metal
I-type:
55 x 47 x 20 mm (wxdxh)
2.17 x 1.85 x 0.79 in (wxdxh)
L-type:
52 x 55 x 20 mm (wxdxh)
2.05 x 2.17 x 0.79 in (wxdxh)
RS232
USB (HID/VCP)



NLV-4001
Barcode CCD scanner
Scan rate: 300 scans/sec
Case material: ABS
33 x 41.1 x 24 mm (wxdxh)
1.30 x 1.62 x 0.94 in (wxdxh)
IP rate: 65
RS232
USB (HID/VCP)

1D-LASER



NLV-1001
Barcode laser scanner
Scan rate: 100 scans/sec
Case material: ABS
30 x 43.3 x 20 mm (wxdxh)
1.18 x 1.70 x 0.79 in (wxdxh)
IP rate: 43
RS232
USB (HID/VCP)
Keyboard Wedge

2D



NLV-3101
2D CMOS area sensor
Scan rate: Up to 60 fps
Case material: ABS
41.1 x 24 x 33 mm (wxdxh)
1.62 x 0.94 x 1.30 in (wxdxh)
IP rate: 65
RS232
USB (HID/VCP)

POWER SUPPLY



POWER SUPPLY 5V/2A

F-70-I-RS232

F-70-L-RS232

NLV-1001-RS232

Sold separately

ART. CODE 11052

ART. CODES SCANNERS

NLV-1001	
NLV-1001-RS232	11613
NLV-1001-USB-HID	11614
NLV-3101	
NLV-3101-RS232 + PS	13091
NLV-3101-USB	13092
NLV-3101-USBCOM	13094
NLV-4001	
NLV-4001-RS232	13934
NLV-4001-USB	13935
F-70	
F-70-I-RS232	13184
F-70-L-RS232	13185

1D-CCD

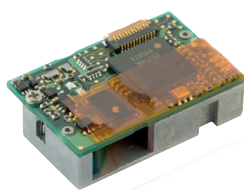


MDC-100
Barcode CCD scanner
Scan rate: 300 scans/sec
22.8 x 15.0 x 11.5 mm
(wxdxh)
0.9 x 0.59 x 0.45 oz
(wxdxh)
Weight CMOS: Ca. 3.5 g /
0.12 oz

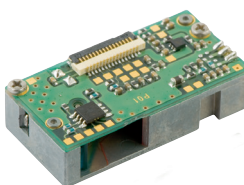


MDC-200
Barcode CCD scanner
Scan rate: 300 scans/sec
22.8 x 15 x 7.5 mm
(wxdxh)
0.90 x 0.59 x 0.30 in
(wxdxh)
Weight CMOS: Ca. 3.5 g /
0.12 oz

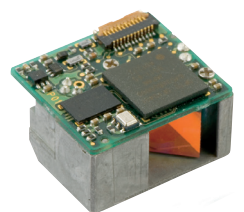
1D-LASER



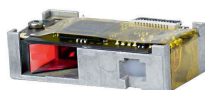
MDL-1000
Barcode laser scanner
Scan rate: 100 scans/sec
Ca. 1.97 - 25.59 in
28 x 18 x 7.8 mm (wxdxh)
1.10 x 0.71 x 0.31 in (wxdxh)
Weight: Ca. 10 g / 0.35 oz



MSL-1000
Barcode laser scanner
Scan rate: 100 scans/sec
Ca. 1.97 - 25.59 in
28 x 14 x 7.8 mm (wxdxh)
1.10 x 0.55 x 0.31 in (wxdxh)
Weight: Ca. 10 g / 0.35 oz

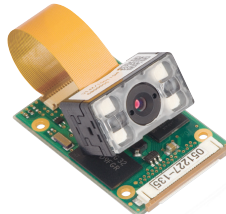


MDL-2001
Barcode laser scanner
Scan rate: 100 scans/sec
Ca. 1.97 - 25.59 in
20.4 x 18 x 11.2 mm
(wxdxh)
0.79 x 0.71 x 0.44 in (wxdxh)
Weight: Ca. 4.7 g / 0.17 oz



MDL-1500
Barcode laser scanner
Scan rate: 100 fps
28 x 14 x 8 mm (wxdxh)
Weight CMOS: Ca. 3.9 g /
0.13 oz

2D



MDI-1000
2D CMOS imager
Scan rate: up to 30 fps
Ca. 1.97 - 11.81 in
Weight CMOS: Ca. 3.9 g /
0.14 oz
PCB: Ca. 3.8 g / 0.13 oz



MDI-4x00
2D CMOS with auto-focus
Scan rate: up to 100 fps
Weight CMOS: Ca. 5.5 g /
0.19 oz
25.3 x 10.0 x 21.0 mm
(wxhxd)
1.0 x 0.39 x 0.83 in
(wxhxd)



MDI-3100
2D CMOS imager
Scan rate: up to 60 fps
Ca. 2.17 - 11.8 in
25.3 x 21 x 12.4 mm
(wxdxh)
1 x 0.83 x 0.49 in (wxdxh)
Weight: Ca. 8 g / 0.28 oz



MDI-2300
2D CMOS imager with
auto-focus
Scan rate: up to 80 fps
Ca. 1.77 - 39.37 in
Weight CMOS: Ca. 7 g /
0.25 oz
PCB: Ca. 3.8 g / 0.13 oz

ART. CODES ENGINES 1D/2D

MDL-1000	
ART. CODE CONN. TIN	11501
MSL-1000	
ART. CODE CONN. TIN	11400
MDL-2001	
ART. CODE CONN. GOLD	12426
ART. CODE FFC FLATCABLE	11438
MDI-1000	
ART. CODE	11572
ART. CODE FPC FLATCABLE 49MM	11575
ART. CODE FPC FLATCABLE 69MM	11620
MDI-2300	
ART. CODE	12768
ART. CODE FFC FLATCABLE	12931
MDI-3100	
ART. CODE	12972
ART. CODE HD	12975
ART. CODE FFC FLATCABLE	11438
MDC-100	
ART. CODE	13349
MDC-200	
ART. CODE	13627
MDI-4000	
ART. CODE	13948
ART. CODE HD	13949
ART. CODE UHD	13959
MDI-4100	
ART. CODE	13950
ART. CODE HD	13951
ART. CODE UHD	13960
MDL-1500	
ART. CODE	13978

HANDHELD SCANNERS

Art. Code	1D CCD	1D LASER	2D	WINDOWS MOBILE	WINDOWS CE	WINDOWS EMBEDDED	ANDROID	PROPRIETARY	NUMERIC	QWERTY	USB	RS232	WEDGE	BLUETOOTH	IRDA	GPRS/EDGE	GPS	WLAN	NFC	RFID	BLACK	WHITE	GRAY	IP-RATING	CABLED	WIRELESS	STATIONARY	PISTOL SCANNER	RINGSCANNER	HANDSCANNER	PRESENTATION SCANNER	COILED CABLE	STAND INCLUDED	SOLD SEPARATELY
C-37-WHITE-USB	•										•											•		42	•									
C-37-BLACK-RS232	•											•										•		42	•									
C-37-BLACK-USB	•										•											•		42	•									
C-40	•										•											•		42	•									
C-41S	•										•											•		42	•									
L-22X		•									•	•										•	•	42	•			•				•		
L-46R		•									•	•										•	•	42	•		•					•		
L-46X		•									•	•										•	•	42	•		•					•		
L-50R		•									•	•										•	•	42	•		•					•		
L-50C-USB-BLK	•										•											•		42	•							•		
L-50C-USB-WHT	•										•											•		42	•							•		
L-50C-RS232-BLK	•										•	•										•		42	•							•		
L-51X-USB-BLK		•									•											•		42	•							•		
M-10 BLACK		•									•											•	•	52	•		•		•					
M-10 WHITE		•									•											•	•	52	•		•		•					
OPI-2201-BLACK-RS232		•									•	•										•		42	•								•	
OPI-2201-BLACK-USB		•									•											•		42	•								•	
OPI-3601-BLACK-RS232		•									•	•										•		42	•		•							
OPI-3601-BLACK-USBHID		•									•											•		42	•		•							
OPL-6845Z-WHITE-RS232	•										•	•										•		42	•			•				•		
OPL-6845Z-WHITE-USB	•										•											•		42	•			•				•		
OPL-6845Z-WHITE-WEDGE	•										•	•										•		42	•			•				•		
OPL-6845Z-BLACK-RS232	•										•	•										•		42	•			•				•		
OPL-6845Z-BLACK-USB	•										•											•		42	•			•				•		
OPL-6845Z-BLACK-WEDGE	•										•	•										•		42	•			•				•		
OPR-2001-RS232	•										•	•										•		42	•			•				•		
OPR-2001-USB	•										•											•		42	•			•				•		
OPR-2001-WEDGE	•										•	•										•		42	•			•				•		
OPR-3001-WHITE-USB	•										•											•	•	54	•		•					•		
OPR-3001-BLACK-RS232	•										•	•										•		54	•		•					•		
OPR-3001-BLACK-USB	•										•											•		54	•		•					•		
OPR-3001-BLACK-WEDGE	•										•	•										•		54	•		•					•		
OPR-3001-BLACK-RS232-COILED	•										•	•										•		54	•		•				•		•	
OPR-3001-BLACK-USB-COILED	•										•											•		54	•		•				•		•	
OPR-3201-WHITE-USB	•										•											•	•	42	•		•					•		
OPR-3201-BLACK-RS232	•										•	•										•		42	•		•					•		
OPR-3201-BLACK-USB	•										•											•		42	•		•					•		
OPR-3201-BLACK-WEDGE	•										•	•										•		42	•		•					•		

STATIONARY SCANNERS

F-70 I-TYPE	13184	•									•	•									•		42	•	•										
F-70 L-TYPE	13185	•									•	•										•		42	•	•									
NLV-1001-RS232	11613	•									•	•										•		43	•	•									
NLV-1001-USB	11614	•									•											•		43	•	•									
NLV-3101-RS232	13091		•								•	•										•		65	•	•									
NLV-3101-USB	13092		•								•											•		65	•	•									
NLV-3101-USBCOM	13094		•								•											•		65	•	•									

CONTACT DETAILS HEADQUARTERS

OPTICON SENSORS EUROPE B.V.

Opaallaan 35 / 2132 XV Hoofddorp / The Netherlands

Tel: +31 (0)23-5692700

E-mail: sales@opticon.com

OPTOELECTRONICS Co., Ltd (JAPAN)

12-17, Tsukagoshi 4-chome / Warabi-city Saitama Pref., 335-0002 / Japan

Tel: +81 (0)48-4461183

E-mail: sales@opto.co.jp

OPTICON INC. (NORTH AMERICA)

2220 Lind Avenue SW, Suite 100 / Renton, WA 98057 / United States of America

Tel: +1 425 651-2120

E-mail: sales@opticonusa.com

CONTACT DETAILS REGIONAL OFFICES

Please check our website www.opticon.com for contact details of our regional offices.

