



...simply the best

Installation Instructions

COUGAR V8

**THIS IS VERSION 8.161.1.0 OF THIS MANUAL
MAY 2009**

PREPARED BY INTER-REGISTER COMMUNICATIONS (M) SDN BHD

This manual is provided for information purposes only. All information included herein is subject to change without notice. IRC is not responsible for any damages, direct or indirect arising from or related to use of this manual.

NOTE: You may change the configuration used in this manual to adapt to your system needs.

If you need any assistance or support, you are welcome to call our HelpDesk line at 03-6272 8400 or call our Support Personnel or the Authorised Dealers from whom you purchase the software.

STEP 1. COUGAR VERSION 8 SETUP

Do the following to install Cougar Version 8:

- a. Double click the *Setup Cougar V8.161.1.0.exe* icon, circled in *Figure 1-1*:

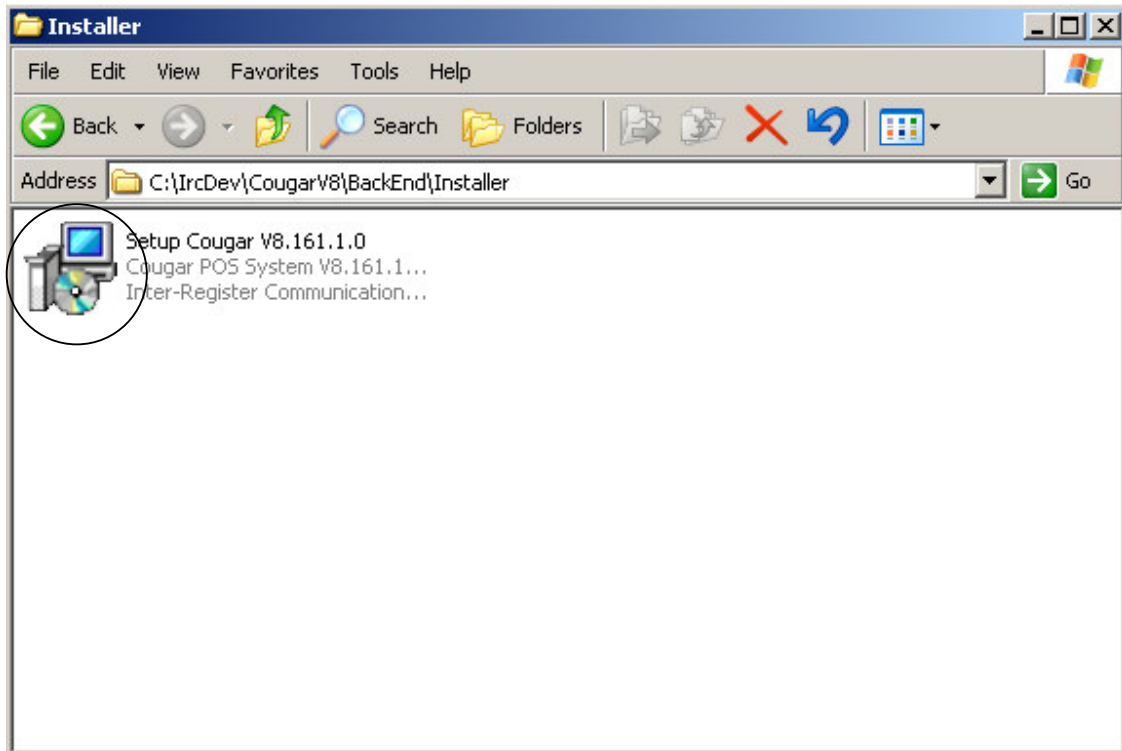


Figure 1-1. Overview of the CougarV8.161.1.0 icon

- b. You will be presented with the Setup - Cougar POS System V8.161.1.0 screen, *Figure 1-2*. Click **Next**.



Figure 1-2. Cougar POS System – Welcome screen

- c. Read, understand and agree to the terms and conditions stated in the License Agreement, *Figure 1-3*.
You must select "I accept the terms in the license agreement" before you can proceed by clicking **Next**.

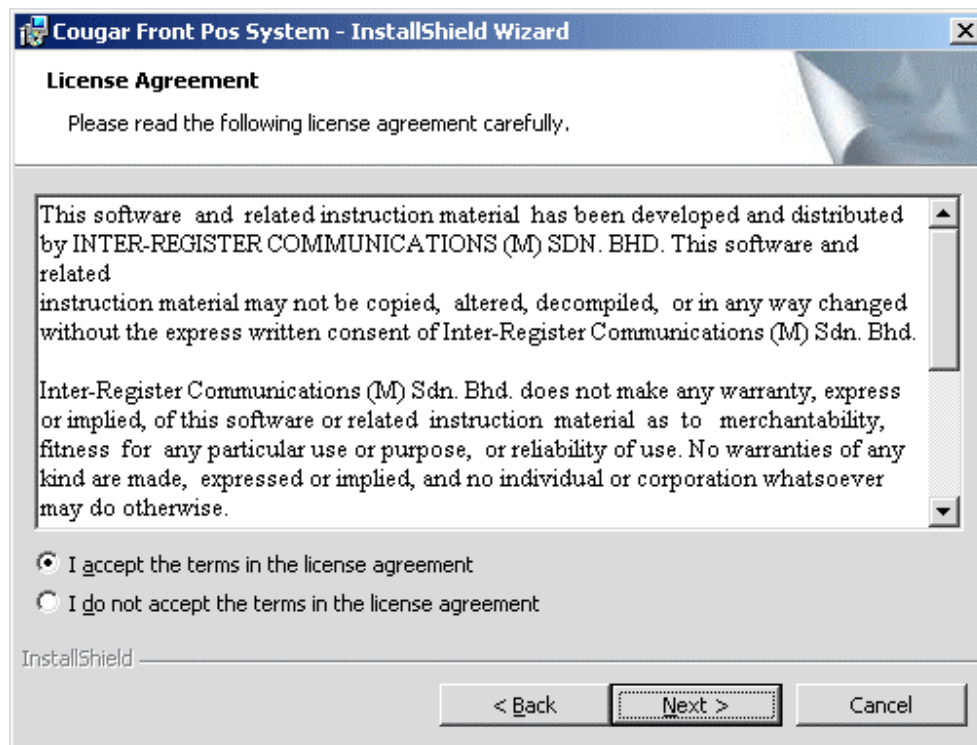


Figure 1-3. Cougar POS System - Install Shield Wizard–License Agreement screen

- d. Read, understand and agree to the terms and conditions stated in the License Agreement, *Figure 1-4*.
You must select "I accept the agreement" before you can proceed by clicking **Next**.

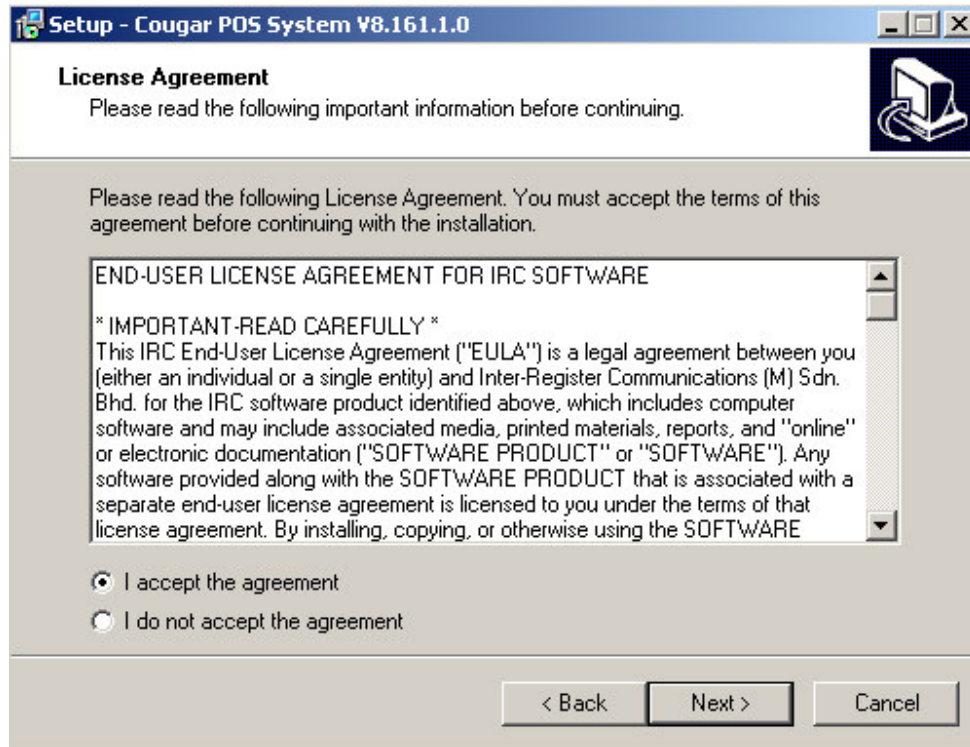


Figure 1-4. Cougar POS System –License Agreement screen

- e. The Password screen will appear, *Figure 1-5*. Enter the password, then clicking **Next** to proceed.

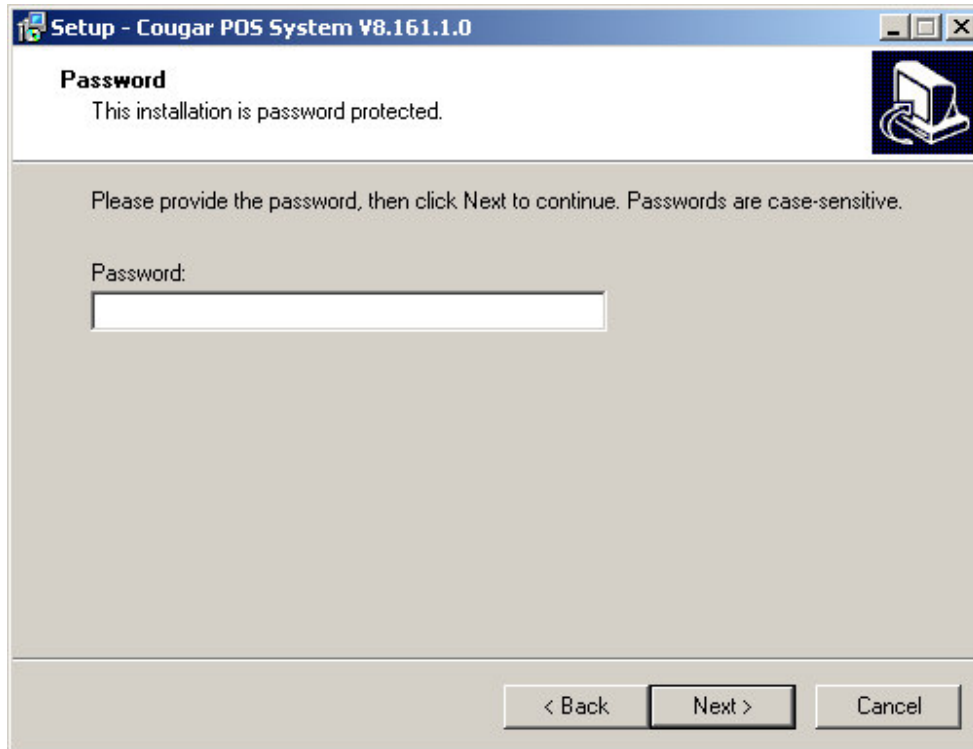


Figure 1-5. Cougar POS System – Password screen

- f. The Select Destination Location Folder will appear, *Figure 1-6*. Click **Browse** if you want to change the installation path. The path that you specify here will be created and the CougarV8 application will be installed here. Click **Next** to continue.

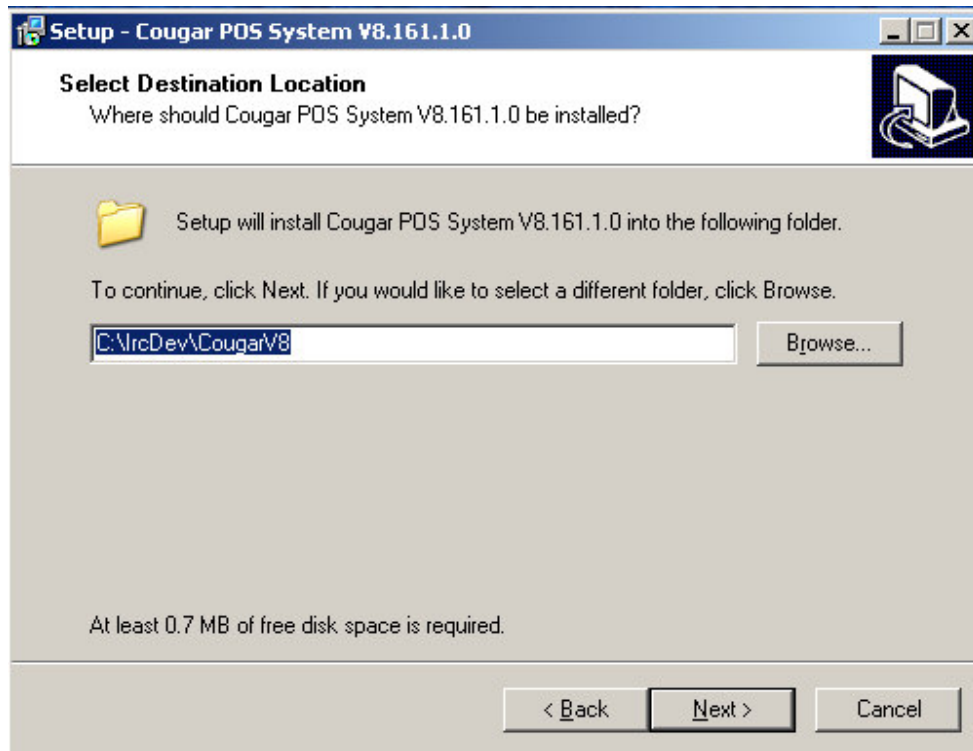


Figure 1-6. Cougar POS System – Destination Folder

- g. The screen Select Components will appear, *Figure 1-7*. Choose *Full Installation* to install the full application. Click **Next** to continue.

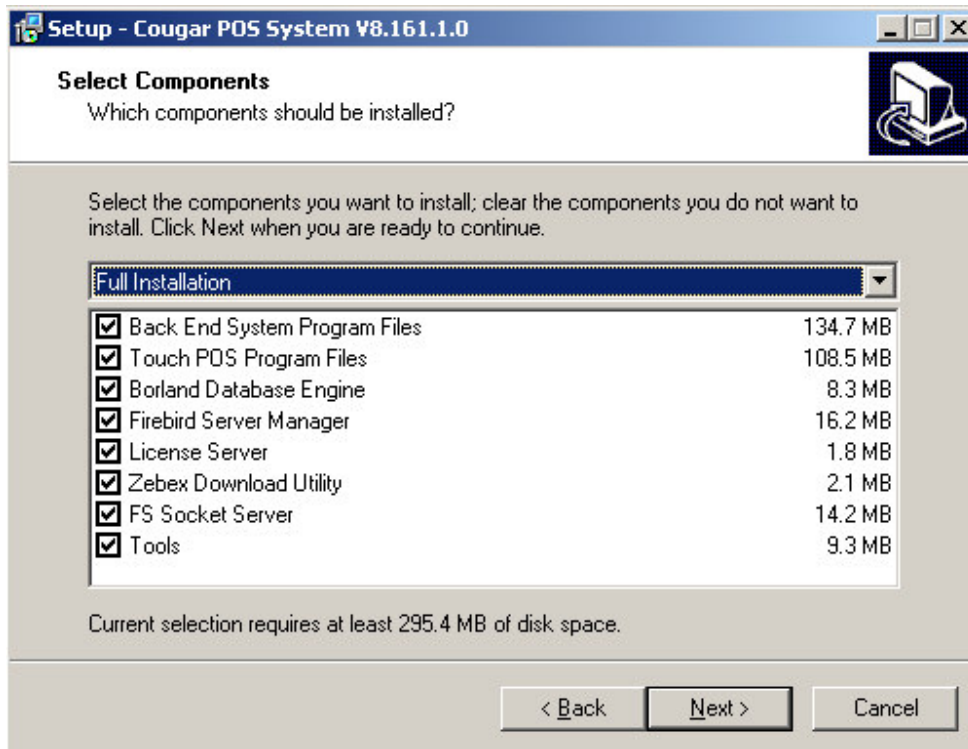


Figure 1-7. Cougar POS System – Select Components screen

- h. The Select Start Menu Folder will appear, *Figure 1-8*. Click **Browse** if you want to change the installation path. The path that you specify here will be created and the Cougar POS SystemV8 application will be installed here. Click **Next** to continue.

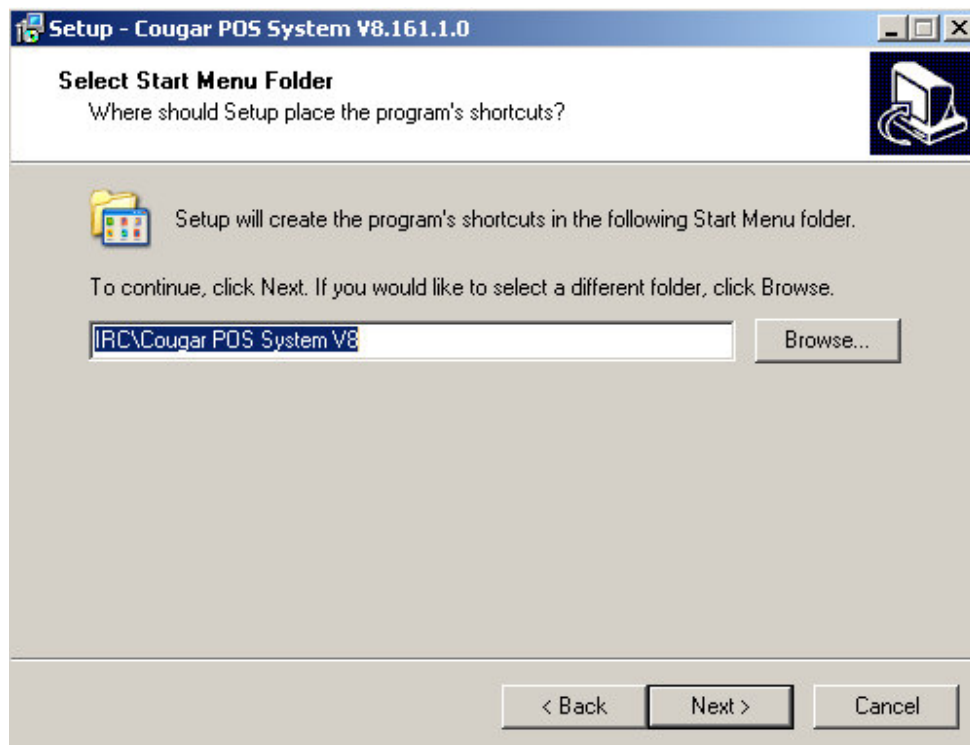


Figure 1-8. Cougar POS System – Select Start Menu Folder

- i. The Select Additional Tasks will appear, *Figure 1-9*. Select “*Create a desktop icon*” to create Cougar POS System icon at desktop. Click **Next** to continue.

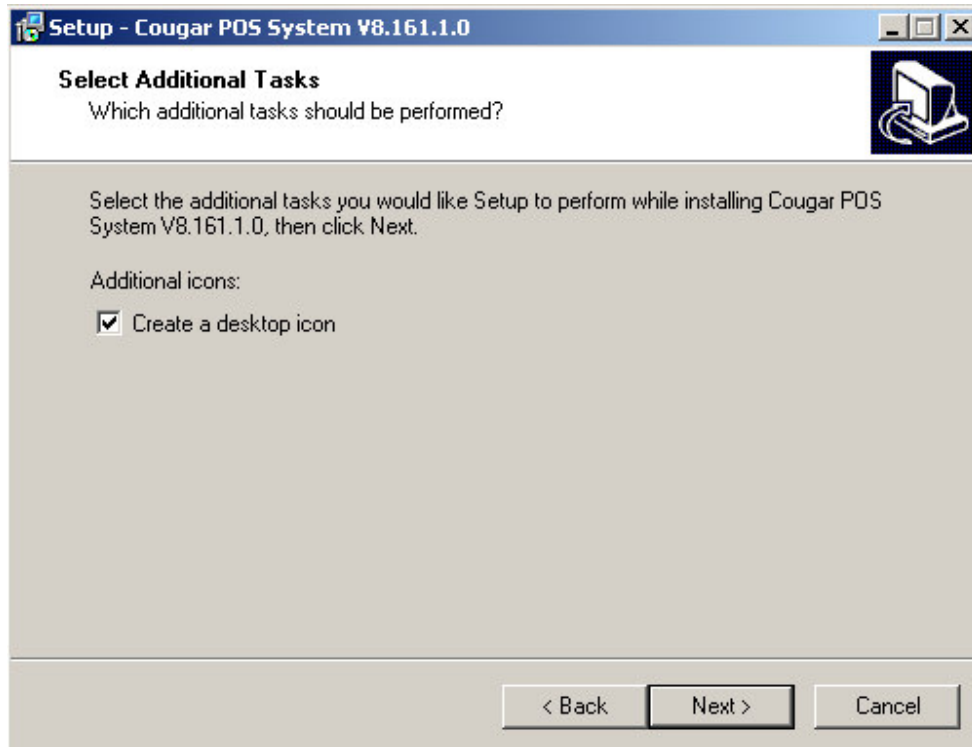


Figure 1-9. Cougar POS System – Select Additional Tasks Folder

- j. You are now Ready to Install. Check that the settings are correct before clicking the **Install** button. Please refer to *Figure 1-10*.

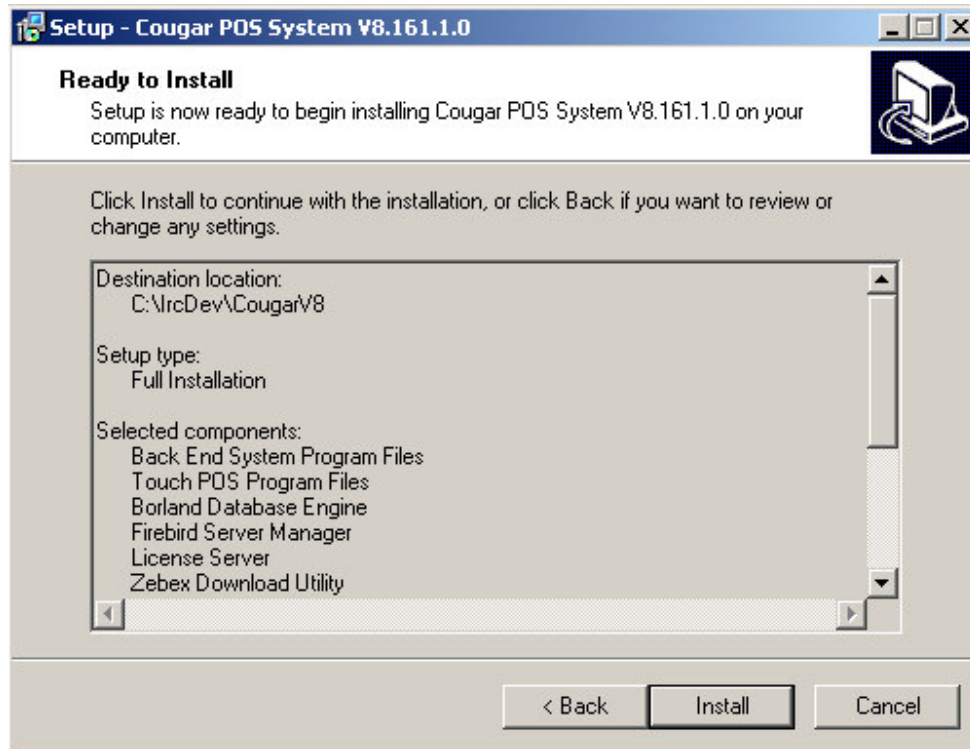


Figure 1-10. Cougar POS System – Ready to Install screen

- k. Cougar POS Office will be installed on your PC. Select the language to use during the installation. Refer to *Figure 1-11*. Click **OK**.

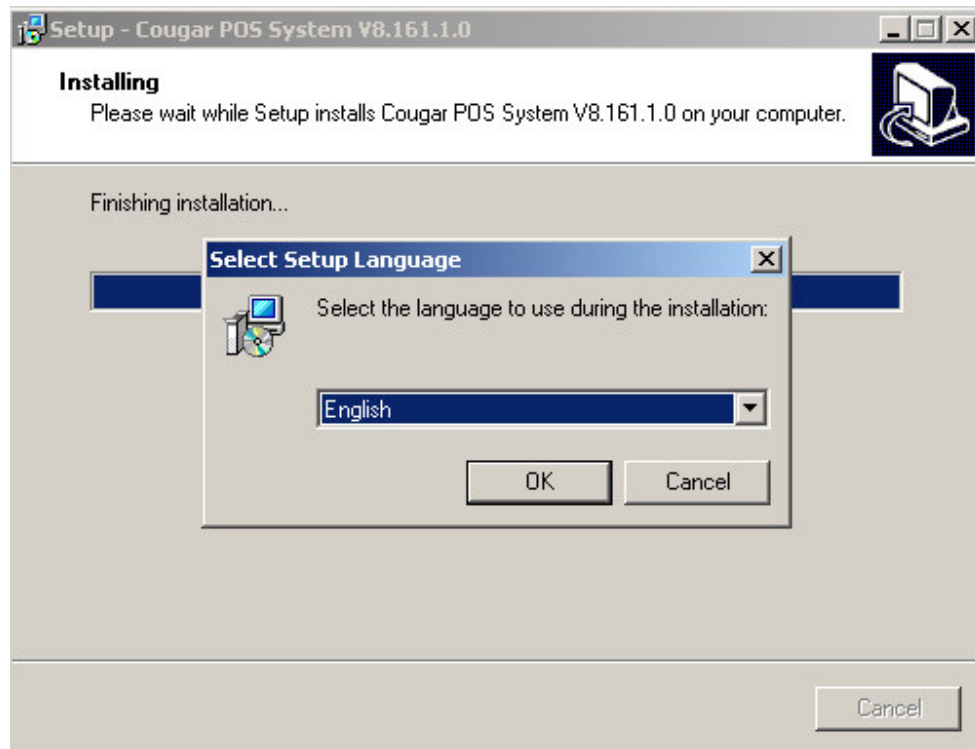


Figure 1-11. Cougar POS System – Select Language screen

STEP 2. FIREBIRD SETUP

- a. You will be greeted with the Firebird Setup Welcome screen. Firebird is the database engine used by POS Application. Click **Next** to proceed, *Figure1-12*.



Figure 1-12. Firebird Setup – Welcome screen

- b. Read, understand and agree to the terms and conditions stated in the License Agreement, *Figure 1-13*. You must select "*I accept the agreement*" before you can proceed by clicking **Next**.

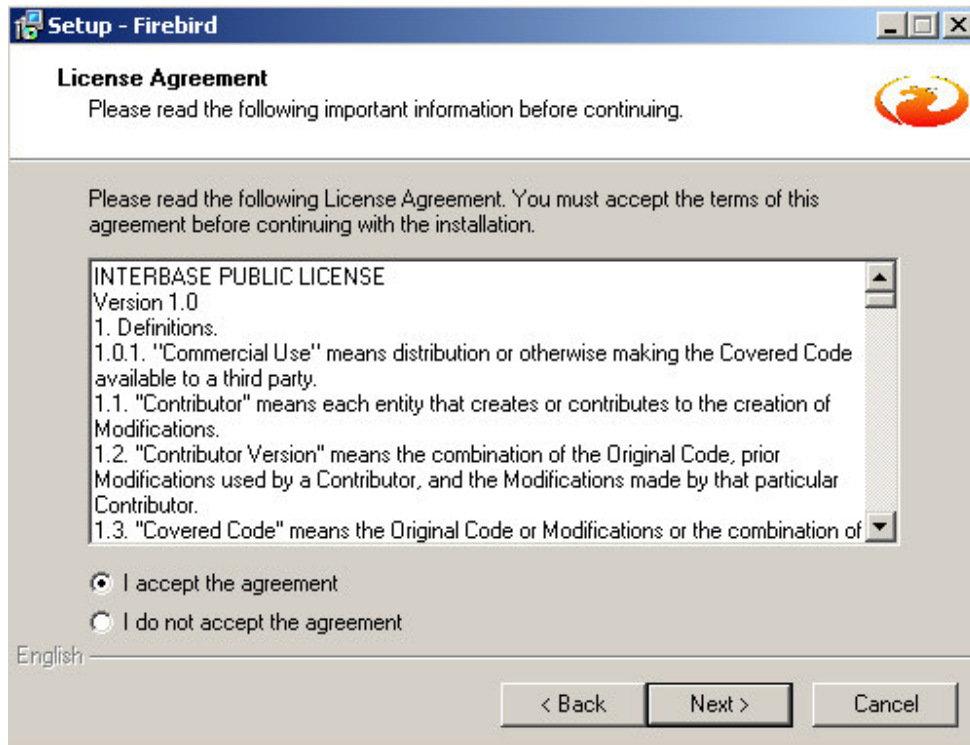


Figure 1-13. Firebird Setup –License Agreement screen

- c. The next screen is the Information screen, *Figure 1-14*. Make sure that you read the notes before proceeding. Click **Next**.

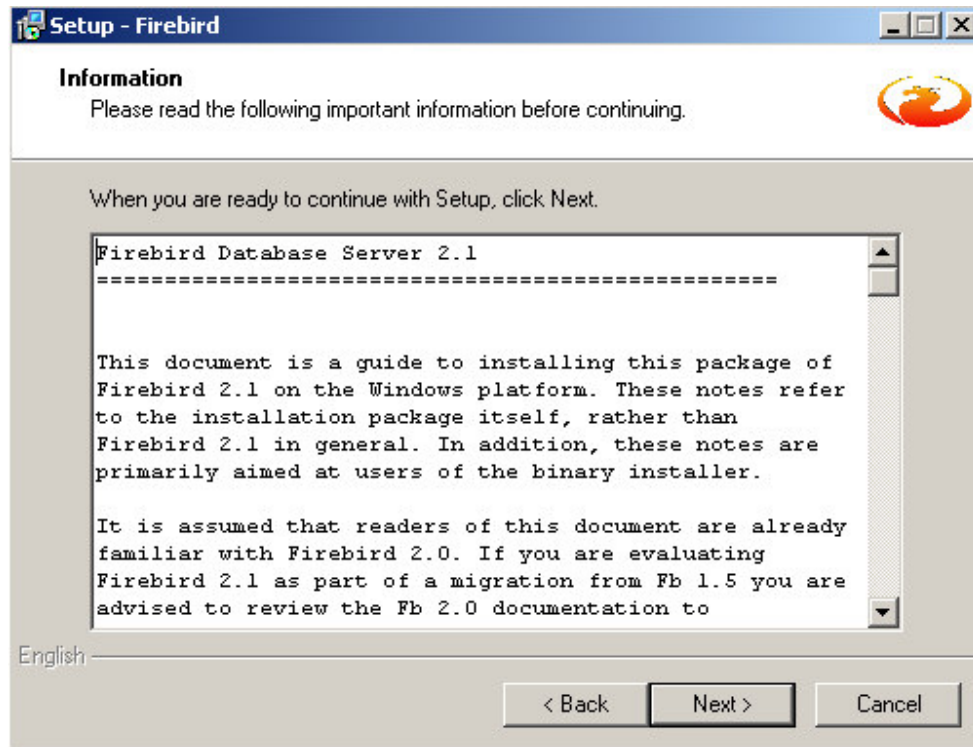


Figure 1-14. Firebird Setup –Information screen

- d. The Select Destination Location Folder will appear, *Figure 1-15*. Click **Browse** if you want to change the installation path. Click **Next** to continue.

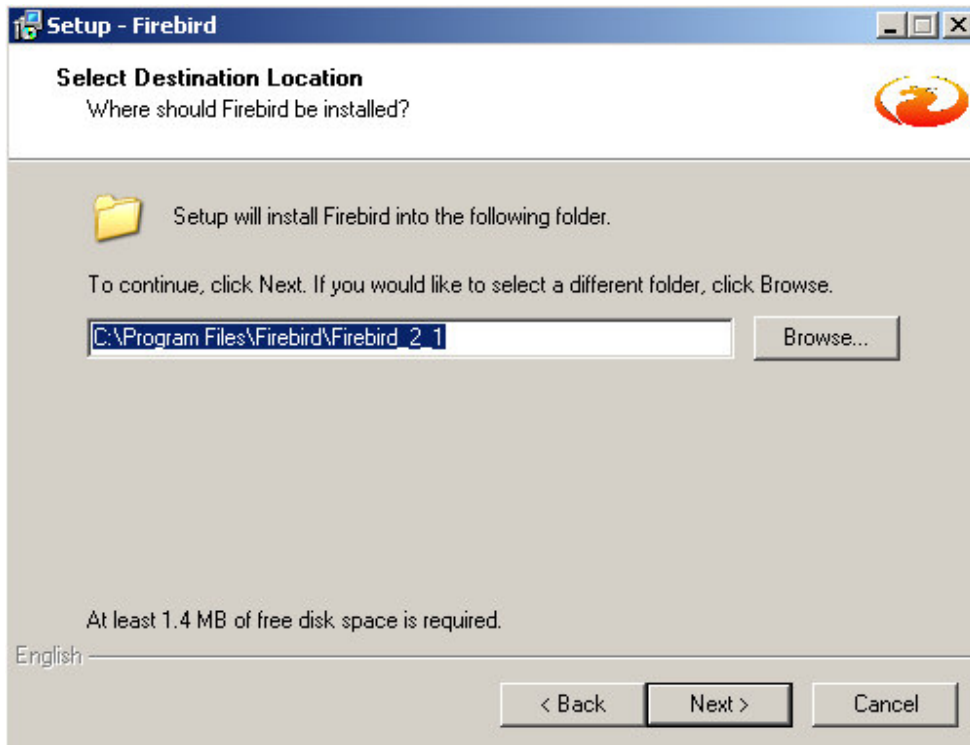


Figure 1-15. Firebird Setup – Select Destination Location

e. The screen Select Components will appear, *Figure 1-16*. Choose *Full installation of Server and development tools* to install the full application. Click **Next** to continue.

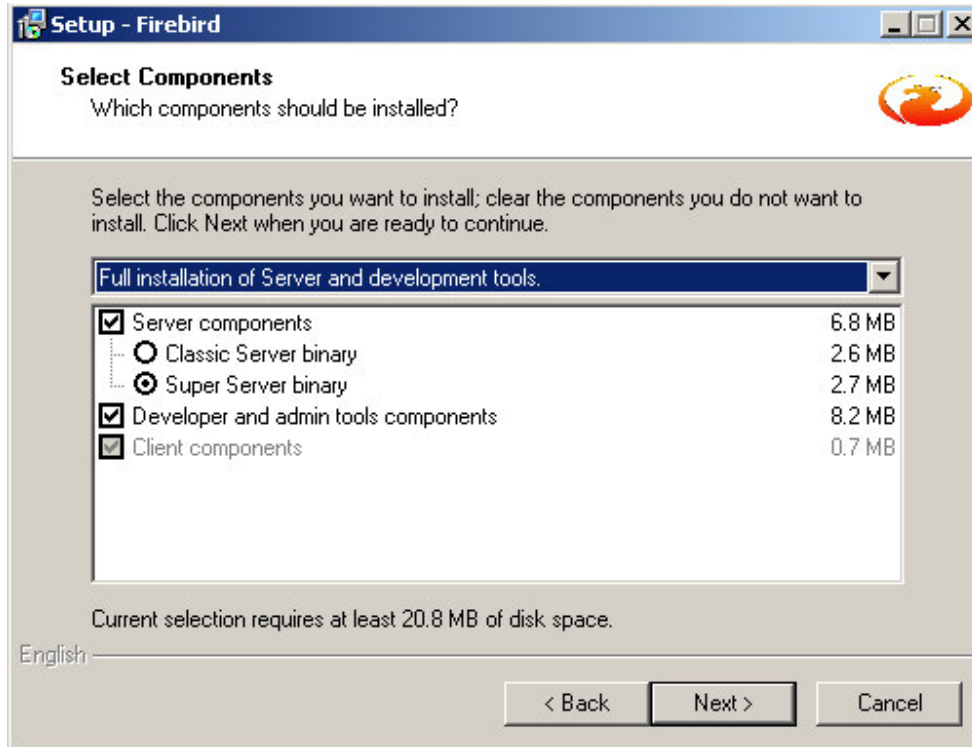


Figure 1-16. Firebird Setup – Select Components

- f. The Select Start Menu Folder will appear, *Figure 1-17*. Click **Browse** if you want to change the installation path. Click **Next** to continue.

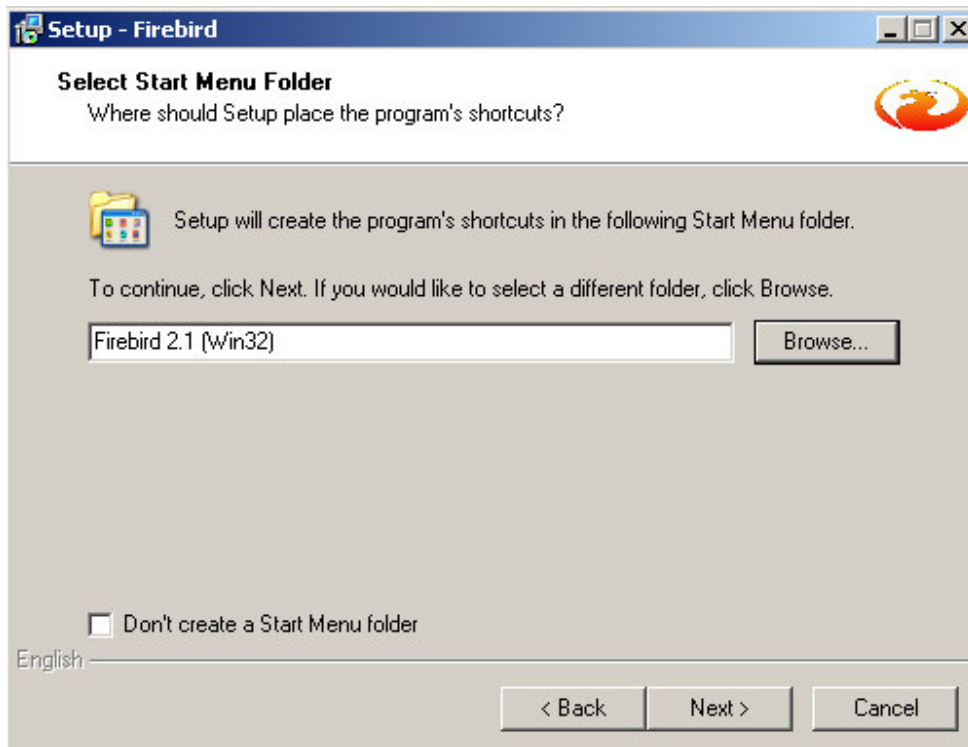


Figure 1-17. Firebird Setup – Select Start Menu Folder

- g. The Select Additional Tasks screen will appear. Select the additional tasks you would like Setup to perform, *Figure 1-18*. Click **Next** to continue.

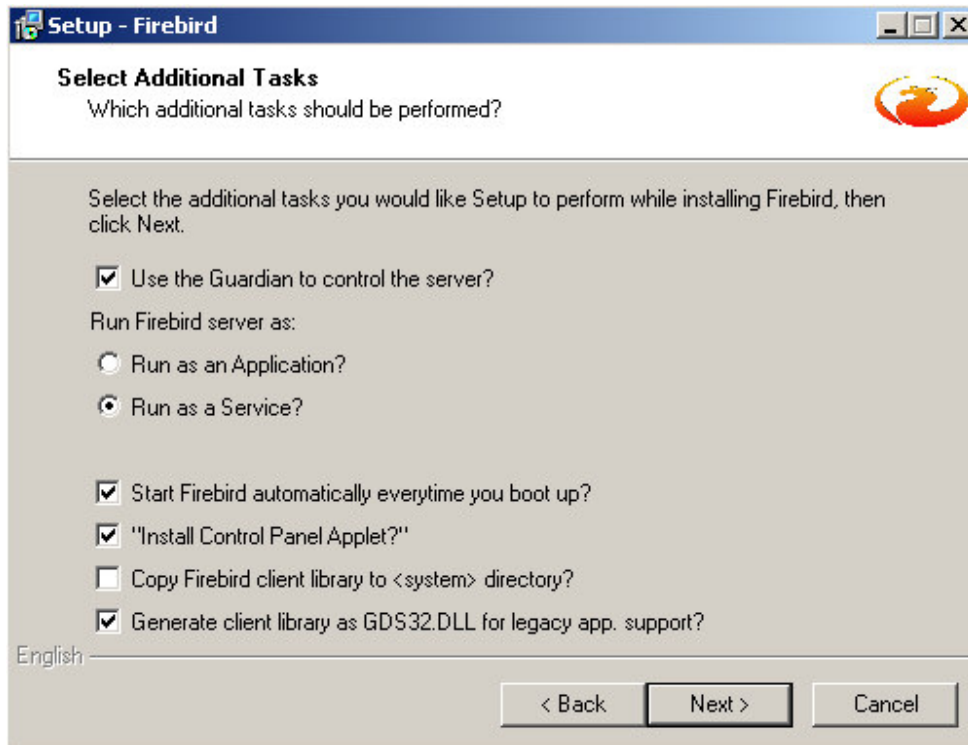


Figure 1-18. Firebird Setup – Select Additional Tasks

- h. You are now Ready to Install for firebird. Check that the settings are correct before clicking the **Install** button. Please refer to *Figure 1-19*.

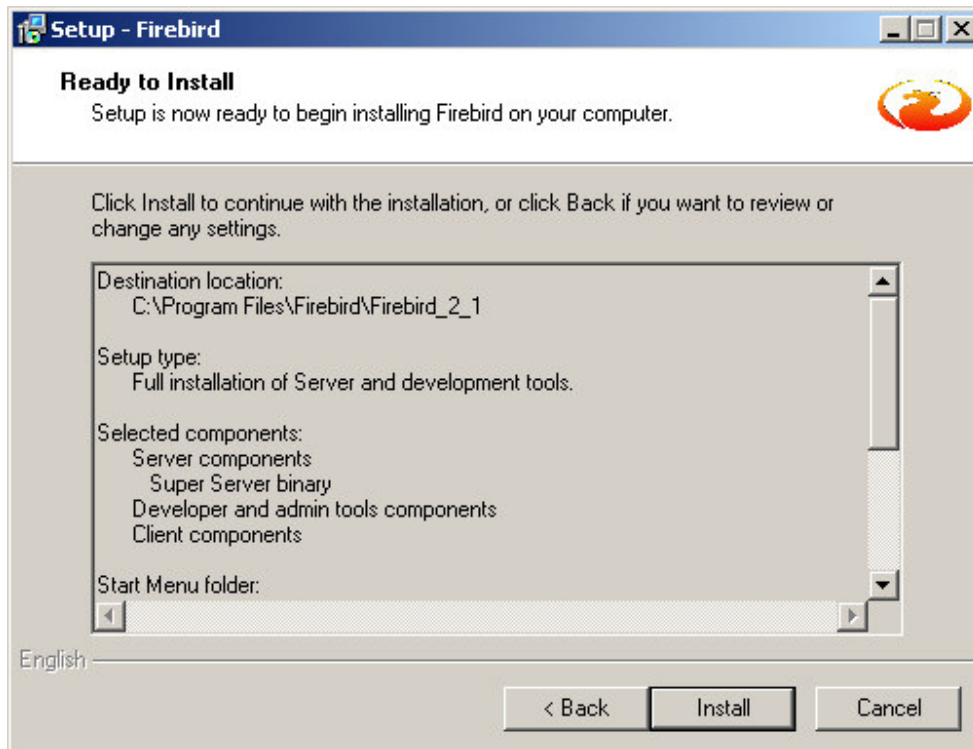


Figure 1-19. Firebird Setup – Ready to Install screen

- i. The next screen is the installation Information screen, *Figure 1-20*. Make sure that you read the notes before proceeding. Click **Next**.

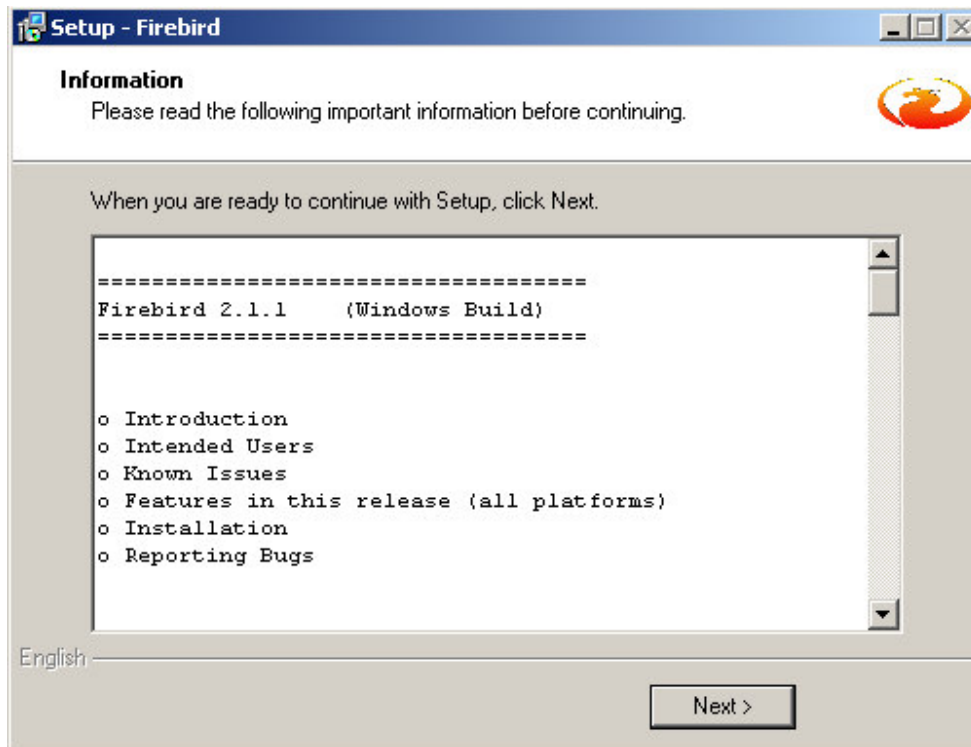


Figure 1-20. Firebird Setup – Information screen

- j. You will be prompted with another screen once Firebird installation completes. Clicking **Finish** on the screen Completing the Firebird Setup Wizard marks the end of Firebird installation. Refer to *Figure 1-21*.



Figure 1-21. Firebird Setup – Completing the Firebird Setup Wizard screen

k. You will be greeted with the BDE Setup Welcome screen. Click **Next** to proceed, *Figure 1-22*.

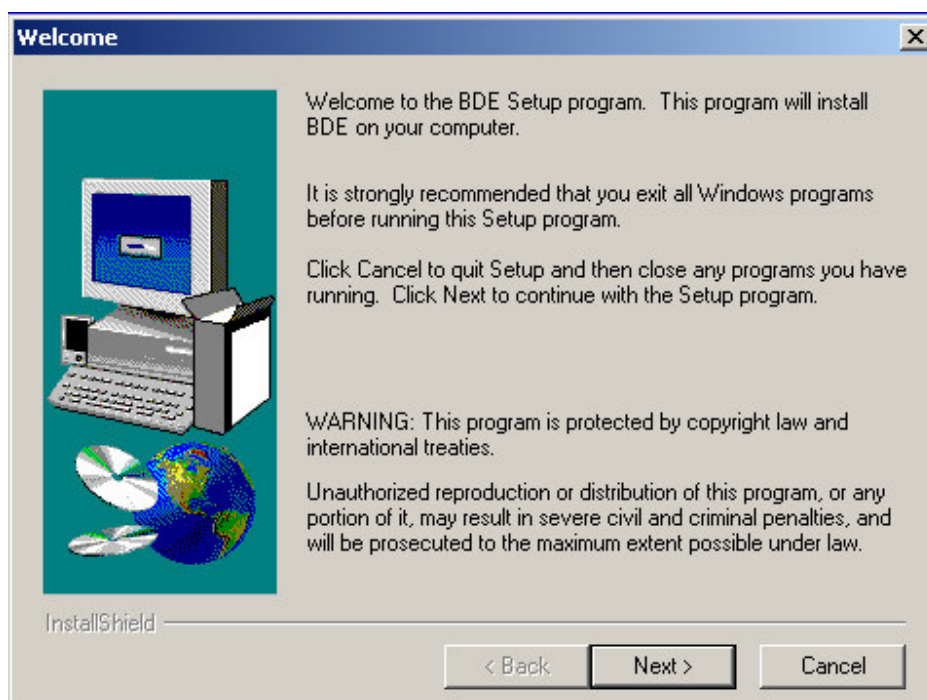


Figure 1-22. BDE Setup – Welcome screen

1. The next screen is the BDE Information screen, *Figure 1-23*. Make sure that you read the notes before proceeding. Click **Next**.



Figure 1-23. BDE Setup – Information screen

- m. The Choose Destination Location Folder will appear, *Figure 1-24*. Click **Browse** if you want to change the installation path. Click **Next** to continue.

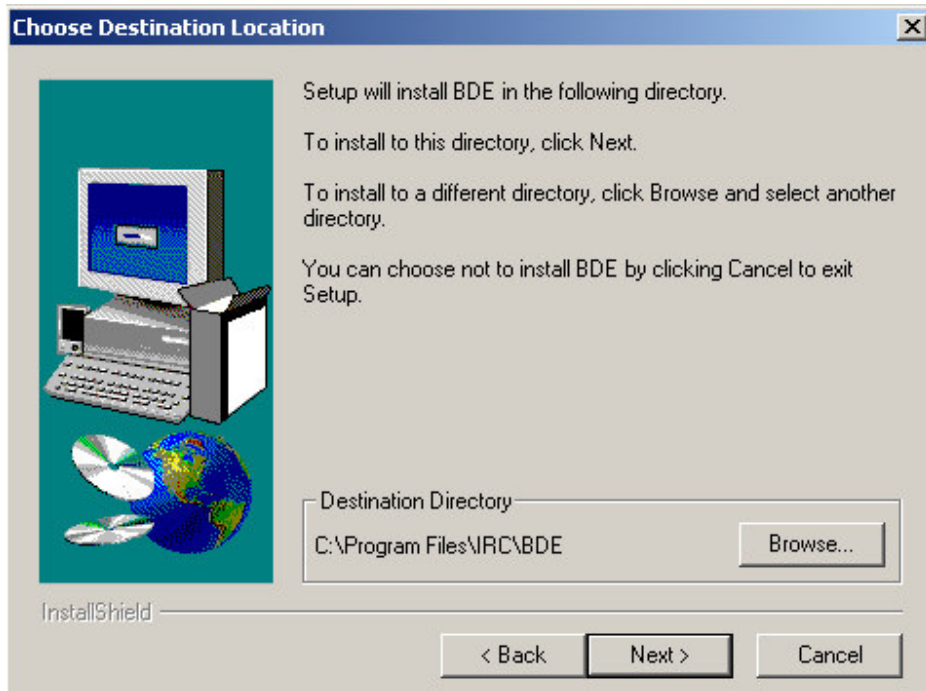


Figure 1-24. BDE Setup – Choose Destination Location screen

- n. After that, select the Programs Folder where you want your BDE to appear. Click **Next** to continue. See *Figure 1.25*

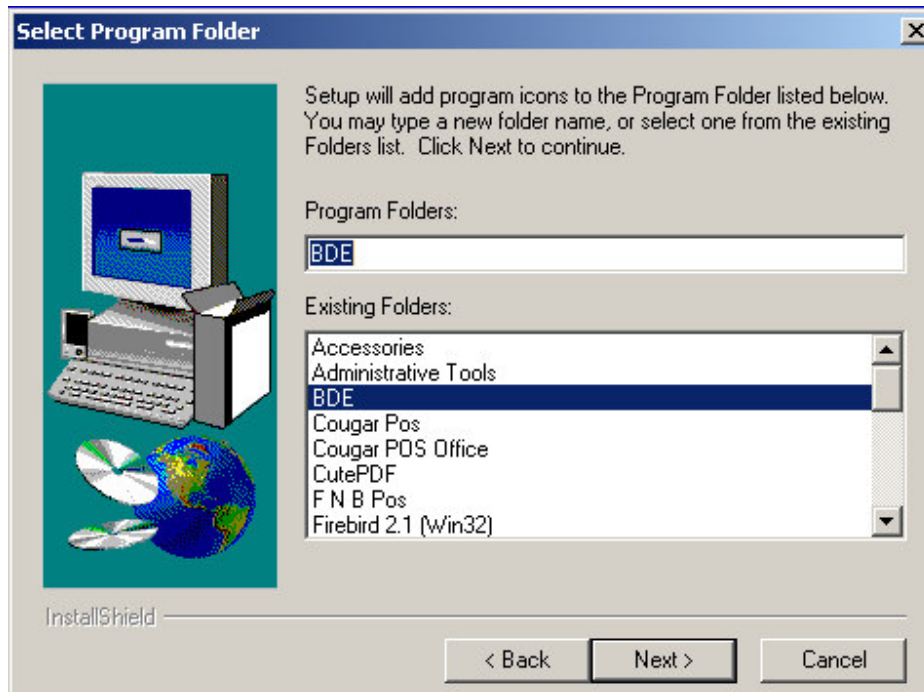


Figure 1-25. BDE Setup – Select Program Folder screen

- o. You are now ready to Start Copying Files. Check that the settings are correct before clicking the **Next** button. Please refer to *Figure 2-26*.

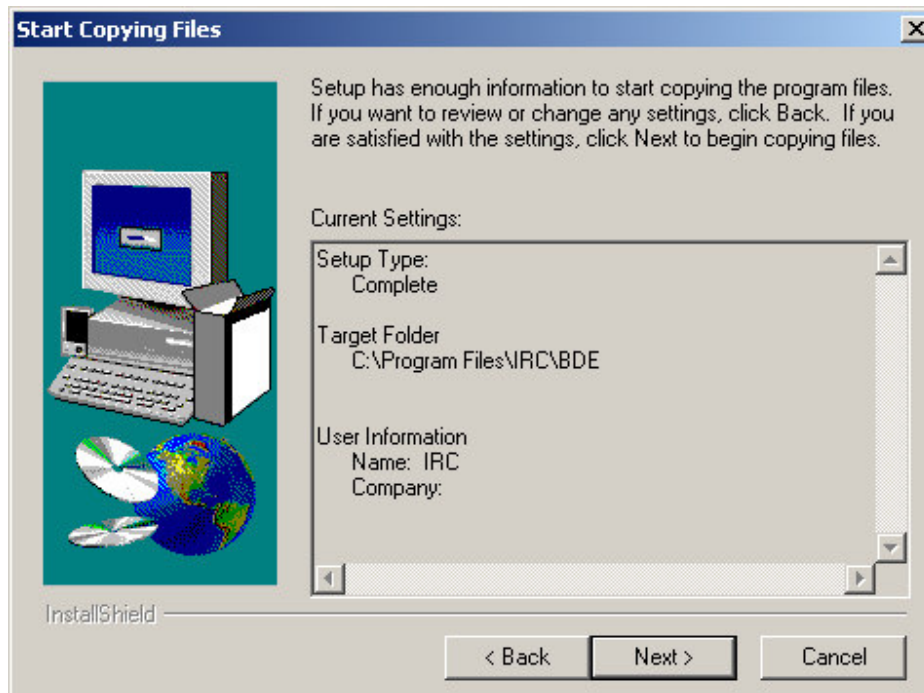


Figure 1-26. BDE Setup – Start Copying Files screen

p. BDE will be installed on your PC. As you need to install other applications, choose the second option to restart later, refer to *Figure 1-27*. Click **Finish**.

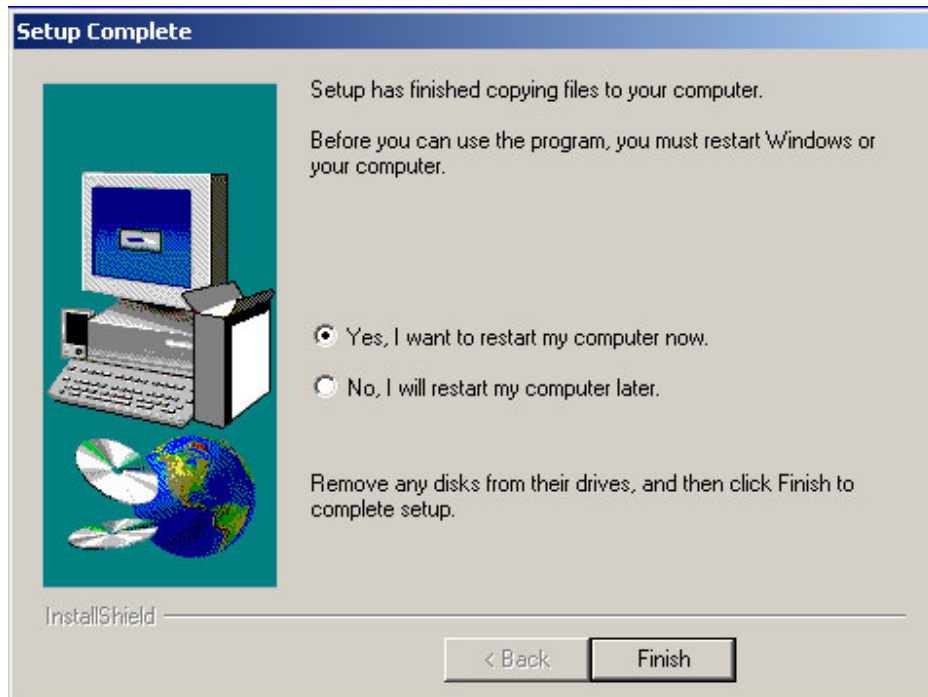


Figure 1-27. BDE Setup – Setup Complete screen

q. Click **Finish** to exit the installation. *Figure 1-29.*

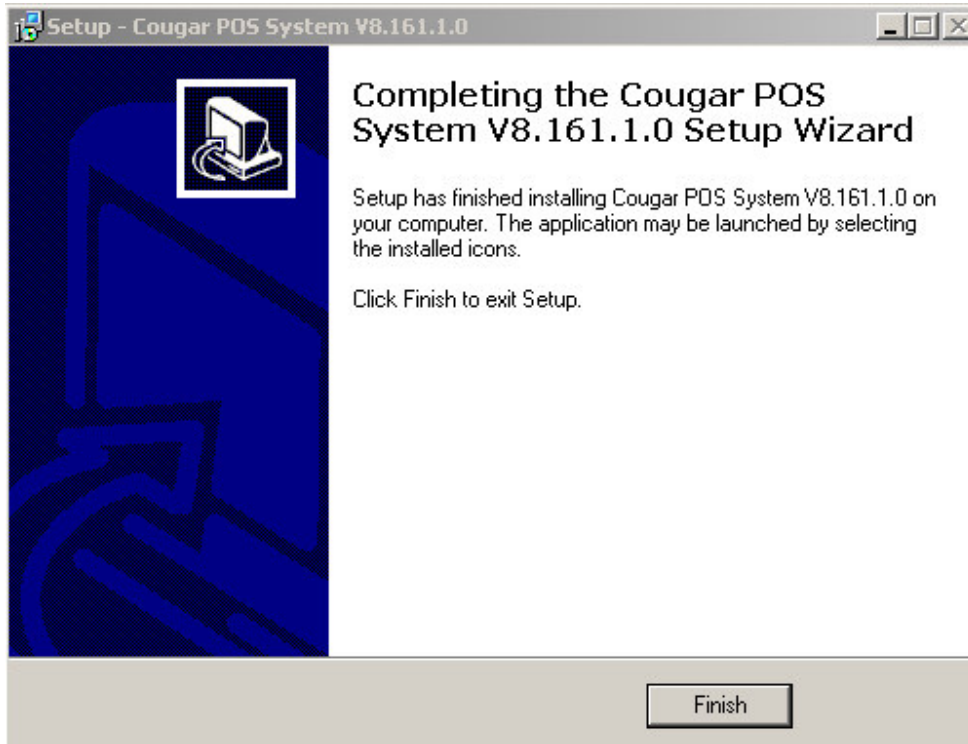


Figure 1-28. Completing the Cougar POS System Setup Wizard screen