



...simply the best

Database Registration

COUGAR V8

**THIS IS VERSION 8.161.1.0 OF THIS MANUAL
MAY 2009**

PREPARED BY INTER-REGISTER COMMUNICATIONS (M) SDN BHD

This manual is provided for information purposes only. All information included herein is subject to change without notice. IRC is not responsible for any damages, direct or indirect arising from or related to use of this manual.

NOTE: You may change the configuration used in this manual to adapt to your system needs.

If you need any assistance or support, you are welcome to call our HelpDesk line at 03-6272 8400 or call our Support Personnel or the Authorised Dealers from whom you purchase the software.

Database Setup

- a. Click the *Database Setup* icon, circled in *Figure 1-1*:

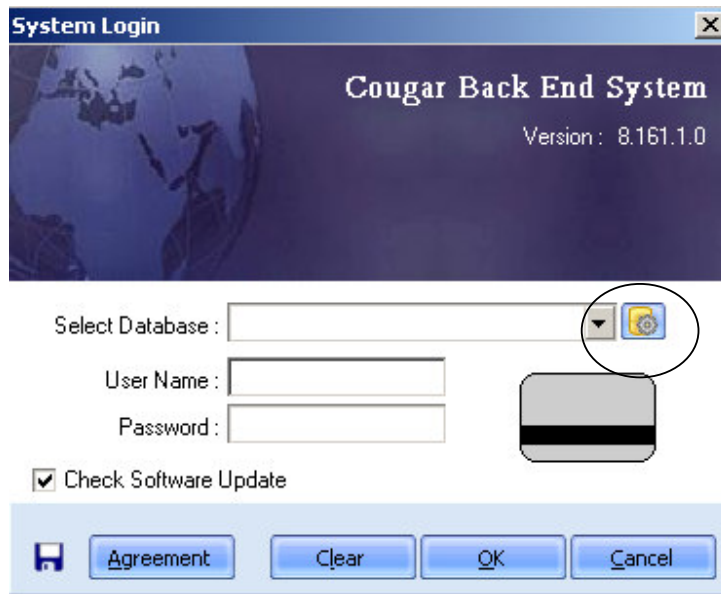


Figure 1-1. Cougar Back End System – System Login screen

- b. The Password screen will appear, *Figure 1-2*. Enter the password, then clicking **OK** to proceed.

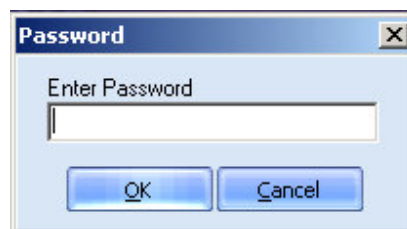


Figure 1-2. Cougar Back End System – Password screen

c. The Database Setup screen will appear, *Figure 1-3*. Select **Add** to insert a new database.

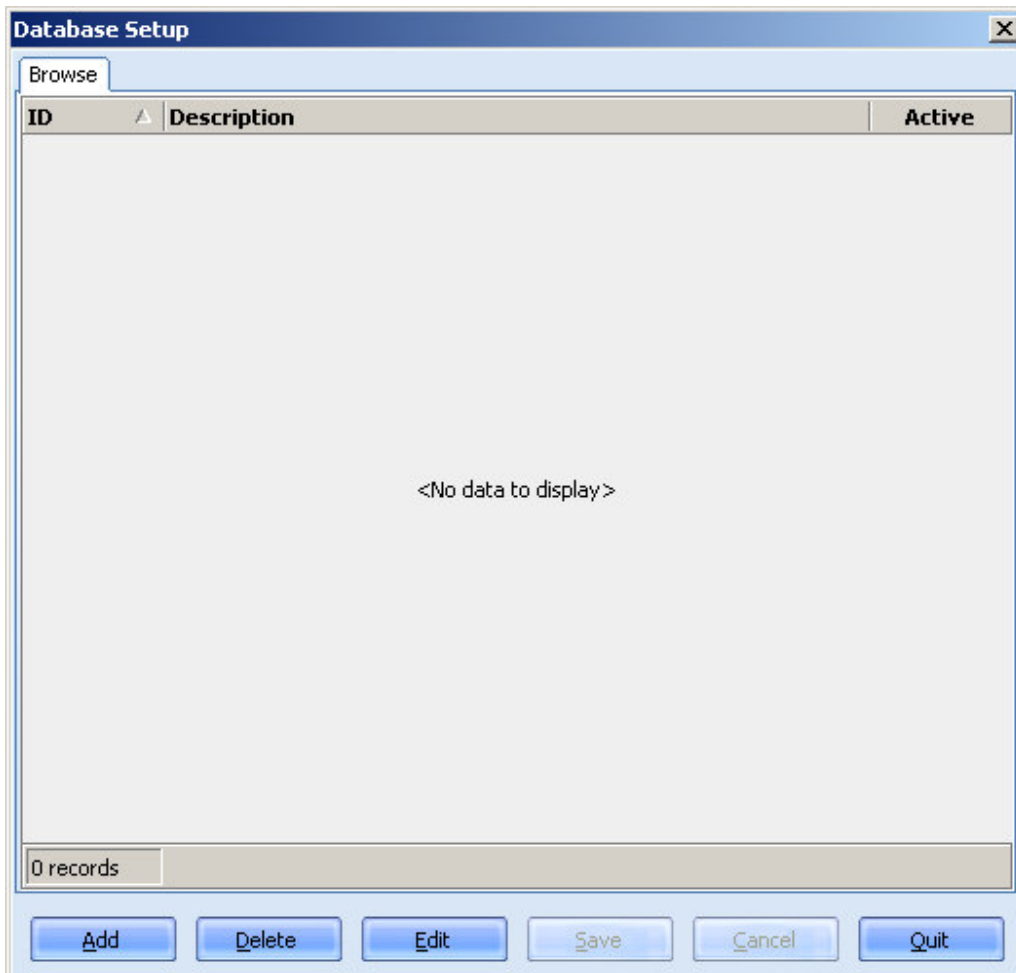


Figure 1-3. Cougar Back End System – Database Setup screen

d. Tab Database, *Figure 1-4*:

The screenshot shows a 'Database Setup' dialog box with a 'Details' tab selected. The 'Database' sub-tab is active, displaying the following fields and controls:

- ID Section:** Includes 'Code' and 'Description' text boxes, a 'Default Setup Group' dropdown menu (set to 'A'), and an 'Active' checkbox (checked).
- Setting Section:** Includes a 'Server' dropdown menu (set to 'Local (Standalone PC)') and a 'Server Version' dropdown menu (set to 'Firebird 2.1').
- Database Path Section:** Includes a 'POS (SvrTsPOS.fdb)' field with a file icon, a 'Back End DB Path' field (set to 'C:\IrcDev\CougarV8\BackEnd\DB') with a file icon, and 'User Name' and 'Password' text boxes. Each path field has a 'Test' button.
- New Database Section:** Includes a 'Database Type' dropdown menu (set to 'New Database').

At the bottom of the dialog box, there are six buttons: 'Add', 'Delete', 'Edit', 'Save', 'Cancel', and 'Quit'.

Figure 1-4. Overview of Tab Database

Under the tab *Database*:

i) Frame *ID*

Create a code and description for your company.

ii) Frame *Setting*

Setting the *Server Type*, depending on your system configuration, there are two ways to setup the *Server Type*. You can either select Local Server (Standalone) or Remote Server (TCP/IP Network).

Refer to the diagram below:

i. **Local Server:**



Figure 1-5. Standalone terminal

The applications and database resides in a single, stand-alone terminal.

ii. **Remote Server:**

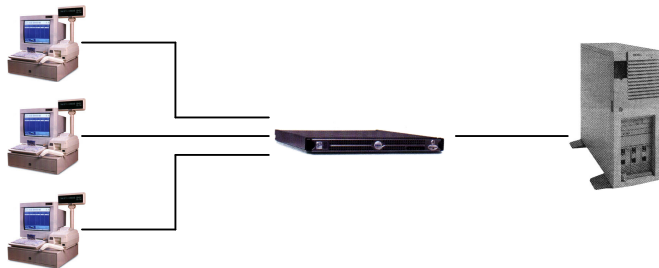


Figure 1-6. Networked system with terminals and server

Usually several terminals are connected to a server. Terminals and server may be sited at different locations. Thus you may place your Front POS at terminals where most sales are done and the Ar and Cougar POS Office at server

If you are setting up the system for a local server, then enter the following information, *Figure 1-7*:



Figure 1-7. Frame Setting with Server Type – Local Server

If you are setting up the system for a remote server, then enter the server IP address and select server OS, *Figure 1-8*:



Figure 1-8. Frame Setting with Server Type – Remote Server

Select your *Server Version* either Interbase 6, Interbase 7, Firebird 1.5, Firebird 2.0 or Firebird 2.1.

POS (SvrTsPOS.fdb) is the day end closing database location. Click ***Reset to Default File***, circled in *Figure 1-9* to get your default path.



Figure 1-9. Overview to Get Default Path

iii) Frame *New Database*

Select your *Database Type* as new database.

e. Tab Library, *Figure 1-10*:

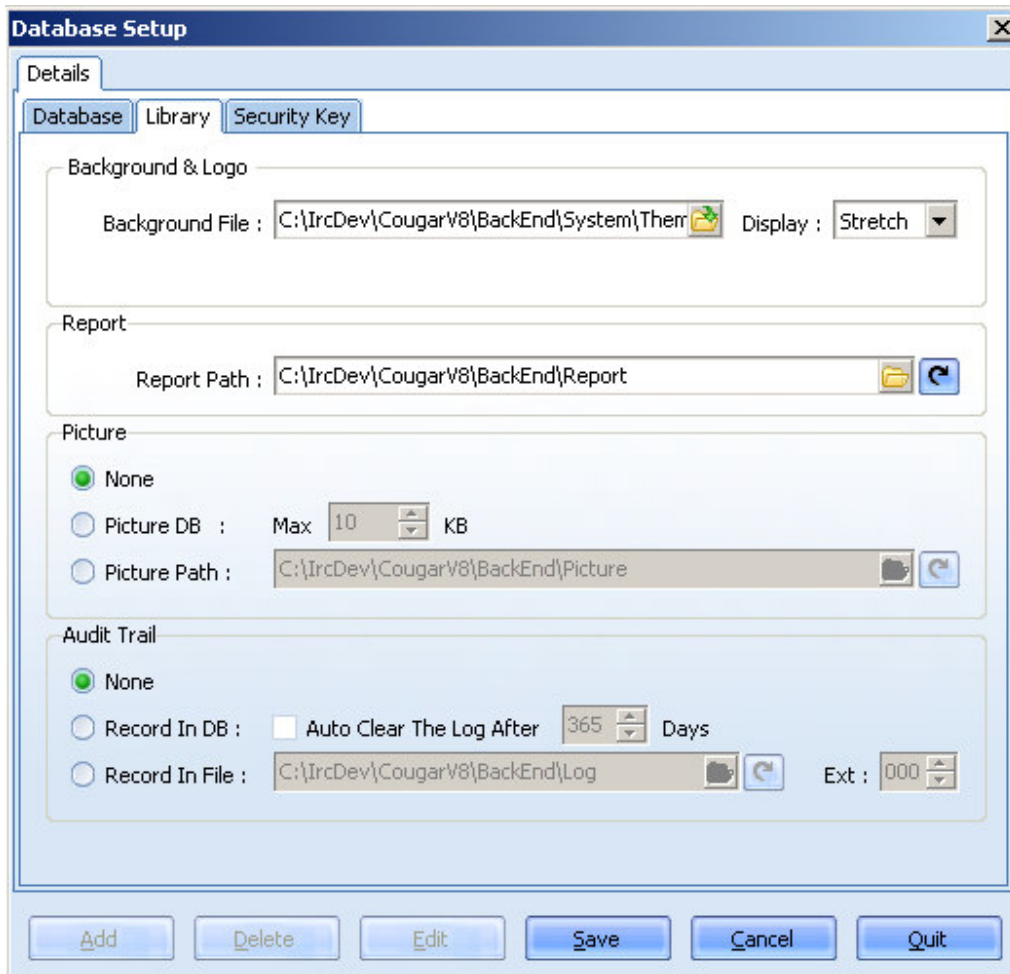


Figure 1-10. Overview of Tab Library

Under the tab *Library*:

i) Frame *Background & Logo*

Select your system background color in *Background File* and its display format.

ii) Frame *Report*

Click **Reset to Default File**, circled in *Figure 1-11* to get your default report path.

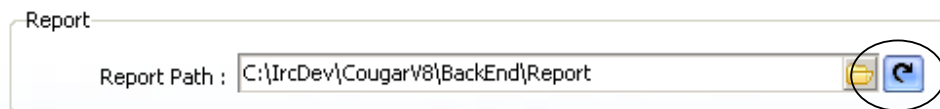


Figure 1-11. Overview to Get Default Report Path

iii) Frame *Picture*

Select to setting your picture size, picture path or none.

iv) Frame *Audit Trail*

Select to save your audit trail in DB, File or none.

f. Tab *Security Key*, *Figure 1-12*:

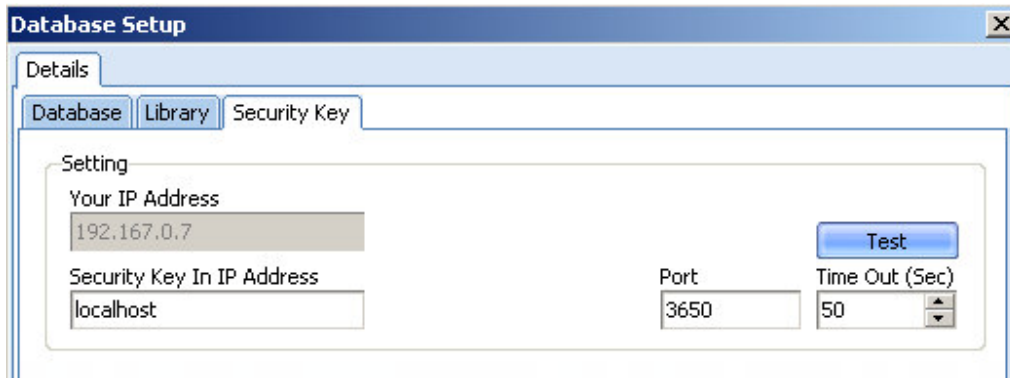


Figure 1-12. Overview of Tab *Security Key*

Security Key is the piece of Dongle that is provided to all registered customers. Set the *Security Key Server*, type in the *Server Name* where you have access to the *License Server* information. It may be located at a local machine or at a remote machine.

i) Frame *Setting*

Under *Security Key In IP Address*, type in your *server IP Address*.

Set *Time Out* to **50** second.

Click **Test** to check whether security key had connected.



Figure 1-13. Back End System - *Security Key*

If connected, *Figure 1-13*. Click **OK**.

Then click **Save**.

Following are some helpful command line that you may use.

- i. To get the IP Address of a local computer, type the following:

```
C:\ipconfig

IP Configuration

Connection-specific DNS Suffix      :
IP Address. . . . . : 192.167.0.1
Subnet Mask . . . . . : 255.255.255.0
Default Gateway . . . . . : 192.167.0.222

C:\
```

- ii. To get the list of computer connected to the network, type the following:

```
C:\net view

Server Name          Remark
-----
\\IRC                 IRC Server
\\WS1                 Workstation 1

C:\
```

- iii. To retrieve the IP Address of your Security Key Server, type the following:

```
C:\ping Server_Name

Pinging Server_Name [192.167.0.1] with with 32 bytes of
data:

C:\
```

Note: [Server Name] is the name of your server where the Security Key is located.

g. System Login screen, *Figure 1-14*. After register a database, select your database and key in user name and password. Then click **OK** to login.

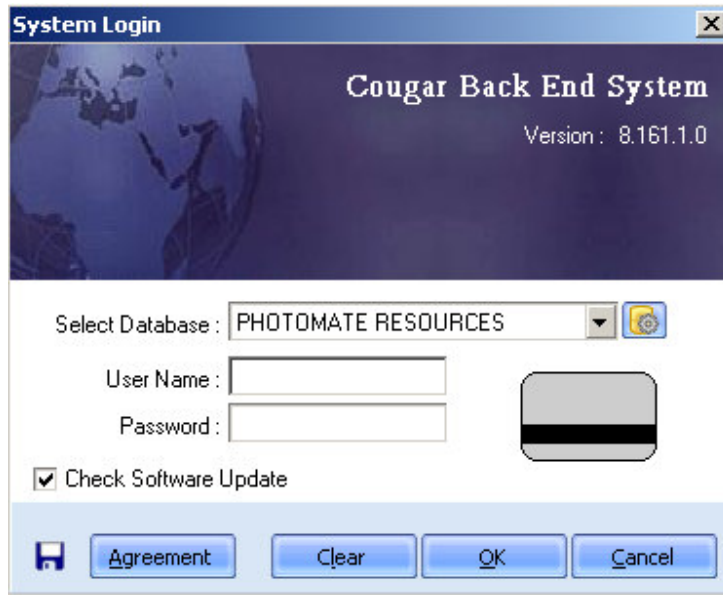


Figure 1-14. Cougar Back End System – System Login screen